



Features:

- Interdigitated amplifying gates
- Fast turn-on and high di/dt
- Low switching losses
- Short turn-off time
- Hermetic metal cases with ceramic insulators

Typical Applications

- Inductive heating
- Electronic welders
- Self-commutated inverters
- AC motor speed control

Part No. Y40KKD-KT39cT		
I_{T(AV)}	900A	
V_{DRM}, V_{RRM}	1200V	1400V
	1600V	
t_q	18~36μs	

SYMBOL	CHARACTERISTIC	TEST CONDITIONS		T _j (°C)	VALUE			UNIT
					Min	Type	Max	
I _{T(AV)}	Mean on-state current	180° half sine wave 50Hz Double side cooled,	T _c =55°C	125			900	A
V _{DRM} V _{RRM}	Repetitive peak off-state voltage Repetitive peak reverse voltage	tp=10ms		125	1200		1600	V
I _{DRM} I _{RRM}	Repetitive peak off-state current Repetitive peak reverse current	at V _{DRM} at V _{RRM}		125			50	mA
I _{TSM}	Surge on-state current	10ms half sine wave		125			10	kA
I ² t	I ² t for fusing coordination	V _R =0.6V _{RRM}					500	A ² s*10 ³
V _{TO}	Threshold voltage			125			1.70	V
r _T	On-state slope resistance						0.48	mΩ
V _{TM}	Peak on-state voltage	I _{TM} =1500A, F=18kN		25			3.15	V
dv/dt	Critical rate of rise of off-state voltage	V _{DM} =0.67V _{DRM}		125			1000	V/μs
di/dt	Critical rate of rise of on-state current	V _{DM} = 67%V _{DRM} to1600A Gate pulse t _r ≤0.5μs I _{GM} =1.5A		125			1500	A/μs
Q _{rr}	Recovery charge	I _{TM} =1000A, tp=4000μs, di/dt=-20A/μs, V _R =100V		125		33	50	μC
t _q	Circuit commutated turn-off time	I _{TM} =1000A, tp=4000μs, V _R =100V dv/dt=30V/μs, di/dt=-20A/μs		125	18		36	μs
I _{GT}	Gate trigger current	V _A =12V, I _A =1A		25	30		250	mA
V _{GT}	Gate trigger voltage		0.8			3.0	V	
I _H	Holding current		20			400	mA	
I _L	Latching current					500	mA	
V _{GD}	Non-trigger gate voltage	V _{DM} =67%V _{DRM}		125			0.3	V
R _{th(j-c)}	Thermal resistance Junction to case	At 180° sine double side cooled Clamping force 18kN					0.028	°C /W
R _{th(c-h)}	Thermal resistance case to heat sink						0.0075	
F _m	Mounting force				15		20	kN
T _{vj}	Junction temperature				-40		125	°C
T _{stg}	Stored temperature				-40		140	°C
W _i	Weight					320		g
Outline	KT39cT40							

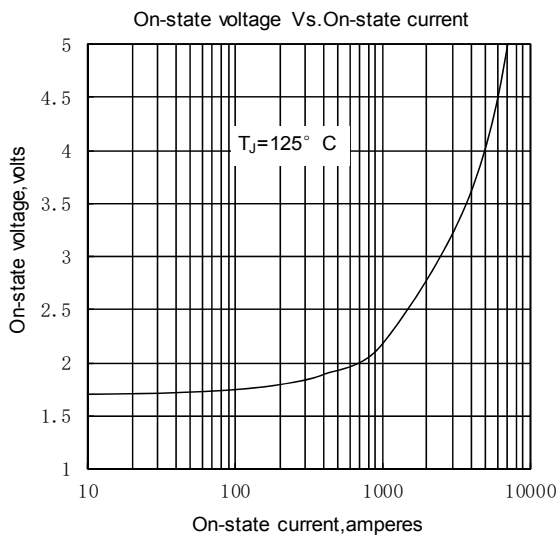


Fig. 1

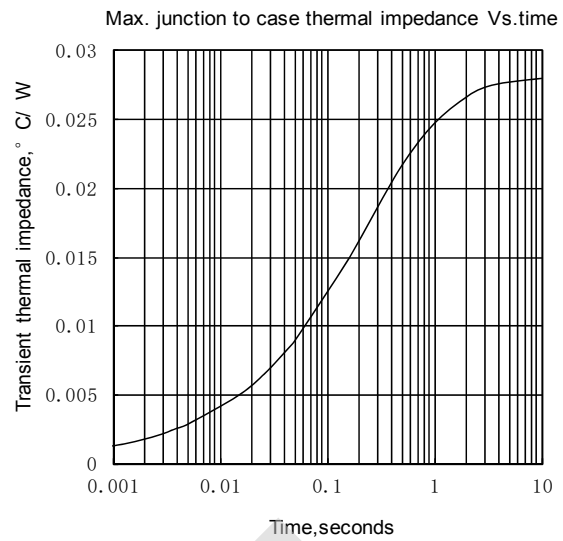


Fig. 2

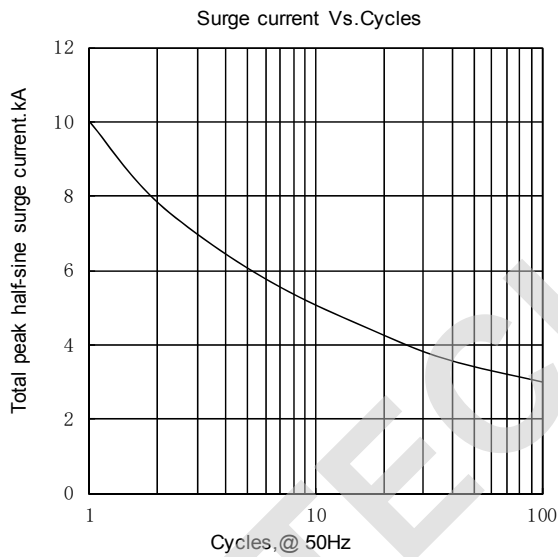


Fig. 3

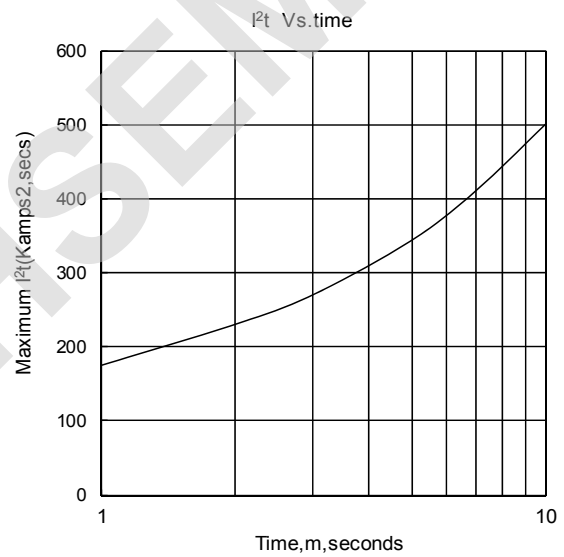


Fig. 4

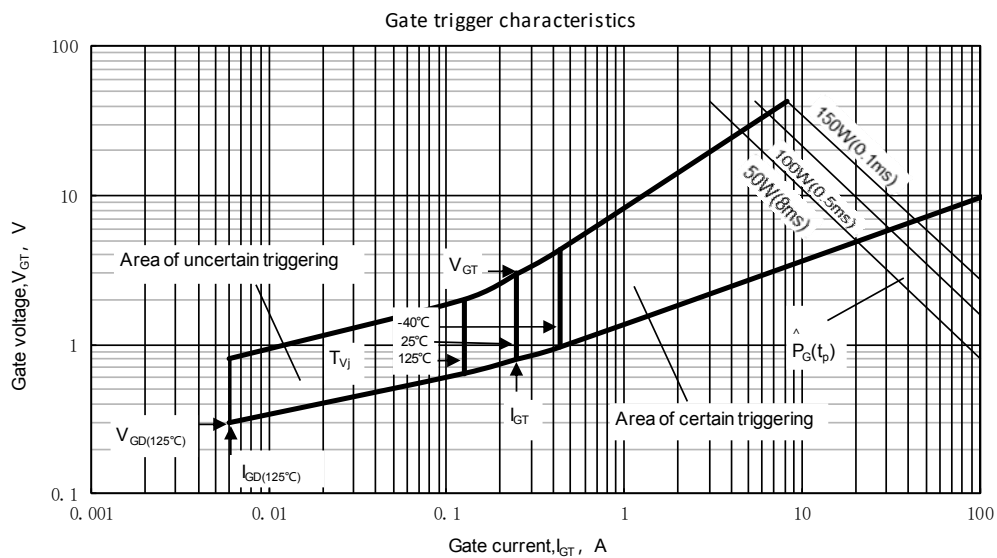
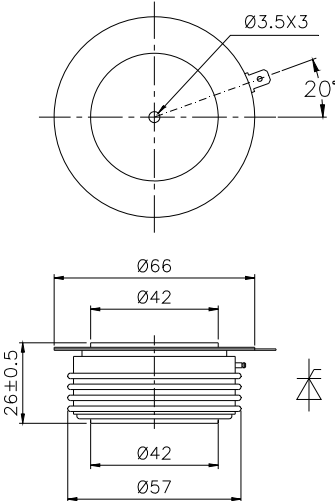


Fig.5

Outline:



TECHSEM reserves the right to change specifications without notice.

TECHSEM