

Features

- Low forward voltage drop
- Soft recovery
- Hermetic metal cases with ceramic insulators

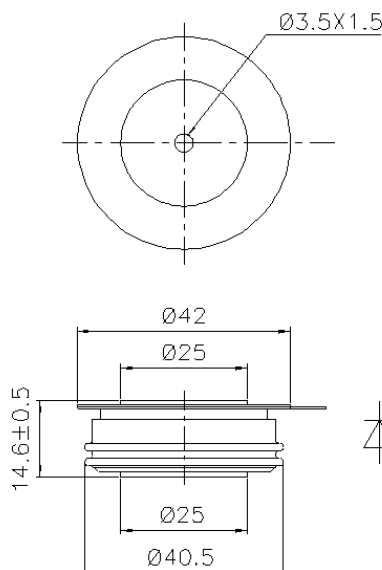
Typical Applications

- Inverters and choppers
- Motor control
- Snubber and free-wheeling diodes

Part No. Y30ZKC-ZT25aT		
I_{F(AV)}	710A	
V_{R(RM)}	1200V	1400V
	1600V	1800V
	2000V	

SYMBOL	CHARACTERISTIC	TEST CONDITIONS	T _j (°C)	VALUE			UNIT	
				Min	Type	Max		
I _{F(AV)}	Mean forward current	180° half sine wave 50Hz Double side cooled, T _c =85°C	150			710	A	
V _{R(RM)}	Repetitive peak reverse voltage	t _p =10ms	150	1100		2000	V	
I _{R(RM)}	Repetitive peak current	at V _{R(RM)}	150			40	mA	
I _{F(SM)}	Surge forward current	10ms half sine wave	150			9	kA	
I ² t	I ² t for fusing coordination	V _R =0.6V _{R(RM)}					405	A ² s*10 ³
V _{F0}	Threshold voltage		150			1.30	V	
r _F	Forward slope resistance						0.42	mΩ
V _{FM}	Peak forward voltage	I _{TM} =1200A, F=7.0kN	25			2.60	V	
I _{rm}	Reverse recovery current	I _{TM} =1000A, t _p =4000μs, di/dt=-60A/μs, V _R =100V	150		42		A	
t _{rr}	Reverse recovery time				3.0			μs
Q _{rr}	Recovery charge				63	90		μC
R _{th(j-c)}	Thermal resistance Junction to case	At 180° sine double side cooled Clamping force 7.0kN				0.045	°C /W	
R _{th(c-h)}	Thermal resistance case to heat sink					0.010		
F _m	Mounting force			5.3		10	kN	
T _{vj}	Junction temperature			-40		150	°C	
T _{stg}	Stored temperature			-40		160	°C	
W _t	Weight				80		g	
Outline	ZT25aT							

Outline:



TECHSEM reserves the right to change specifications without notice.