

**Features:**

- Super fast recovery
- Low forward voltage
- Low leakage current
- Popular module package

Typical Applications:

- Inverter welding power supply
- Power supply for telecommunication
- Various switching power supply

V _{RRM}	Type & Outline
200V	MUR20040-235H3

SYMBOL	CHARACTERISTIC	TEST CONDITIONS	T _j (°C)	VALUE			UNIT
				Min	Type	Max	
I _{F(AV)}	Maximum average forward current	Single side cooled, T _C =100°C Per Module.	150			200	A
V _{RRM}	Repetitive peak voltage	tp=10ms	25			400	V
I _{RRM}	Repetitive peak current	V _{RM} =400V	150			500	μA
			25			10	μA
I _{FSM}	Surge forward current	Per Diode , 8.3ms half sine wave	25			1.1	kA
V _{FM}	Peak forward voltage	Per Diode @I _{FM} =100A	125		1.1	1.2	V
			25		1.2	1.4	V
trr	Reverse Recovery Time	I _F =0.5A, I _{RM} =1A, I _{RR} =0.25A	125		60	65	ns
			25		80	100	ns
C _J	Junction Capacitance	V _R =200V			35		pF
R _{th(j-c)}	Thermal resistance Junction to case	Per Diode , Single side cooled				0.40	°C/W
T _{vj}	Junction temperature			-55		150	°C
T _{stg}	Stored temperature			-55		125	°C
F _m	Terminal connection torque(M6)				5.0		N·m
	Mounting torque(M6)				5.0		N·m
W _t	Weight				105		g
Outline	235H3						

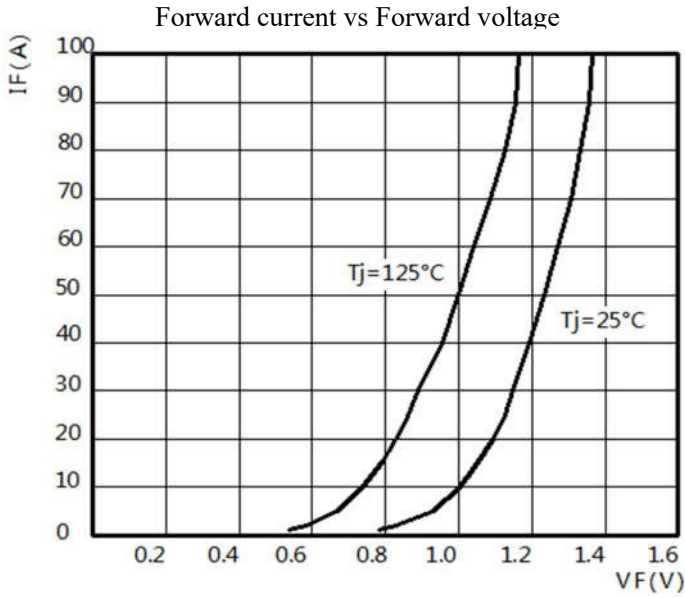


Fig.1

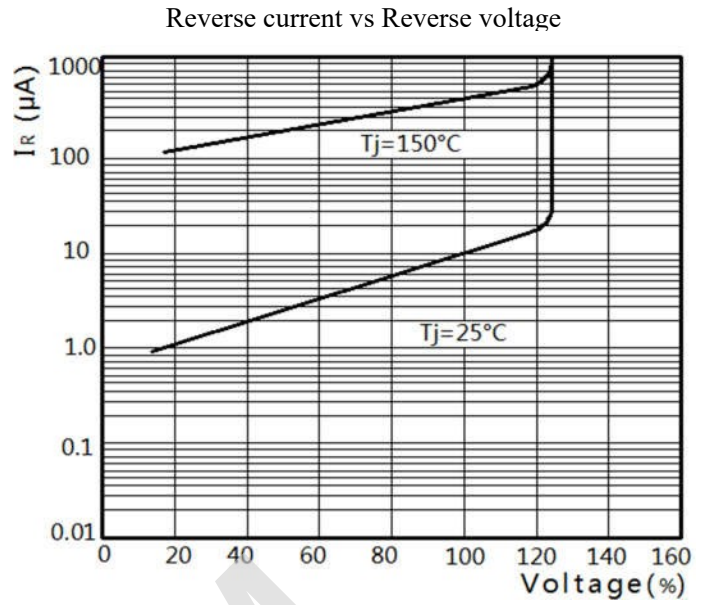


Fig.2

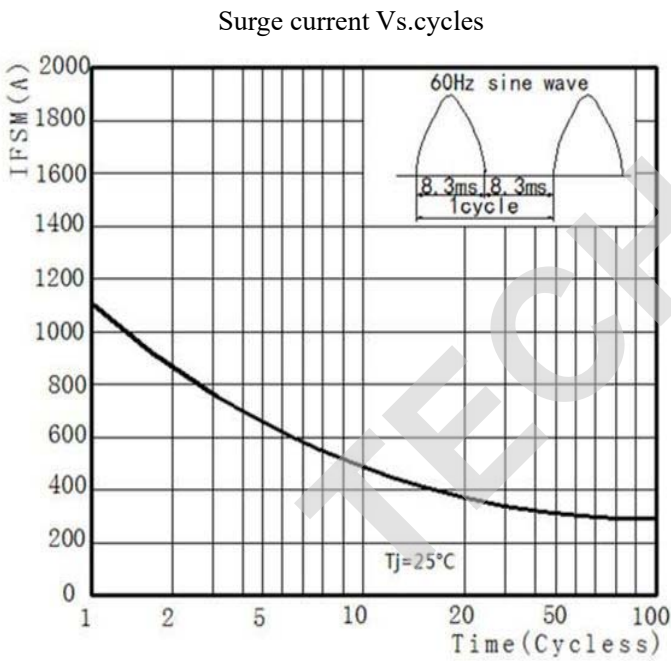


Fig.3

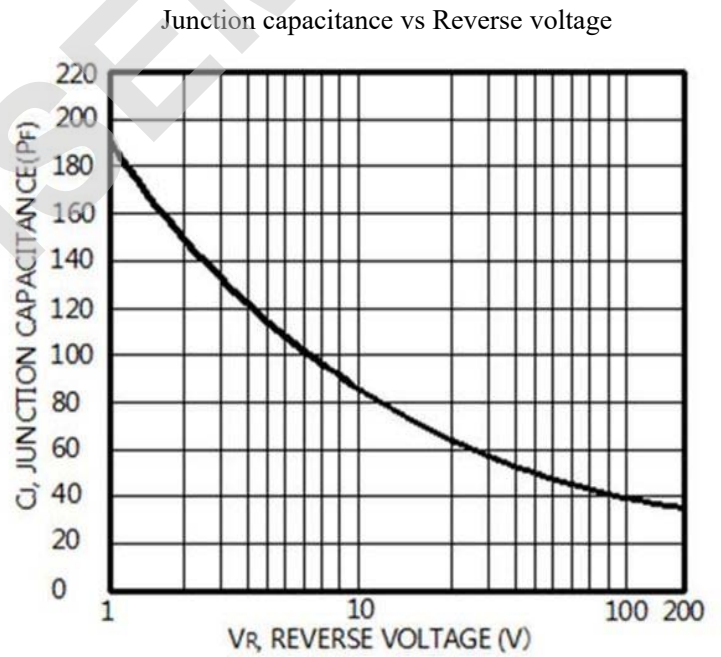
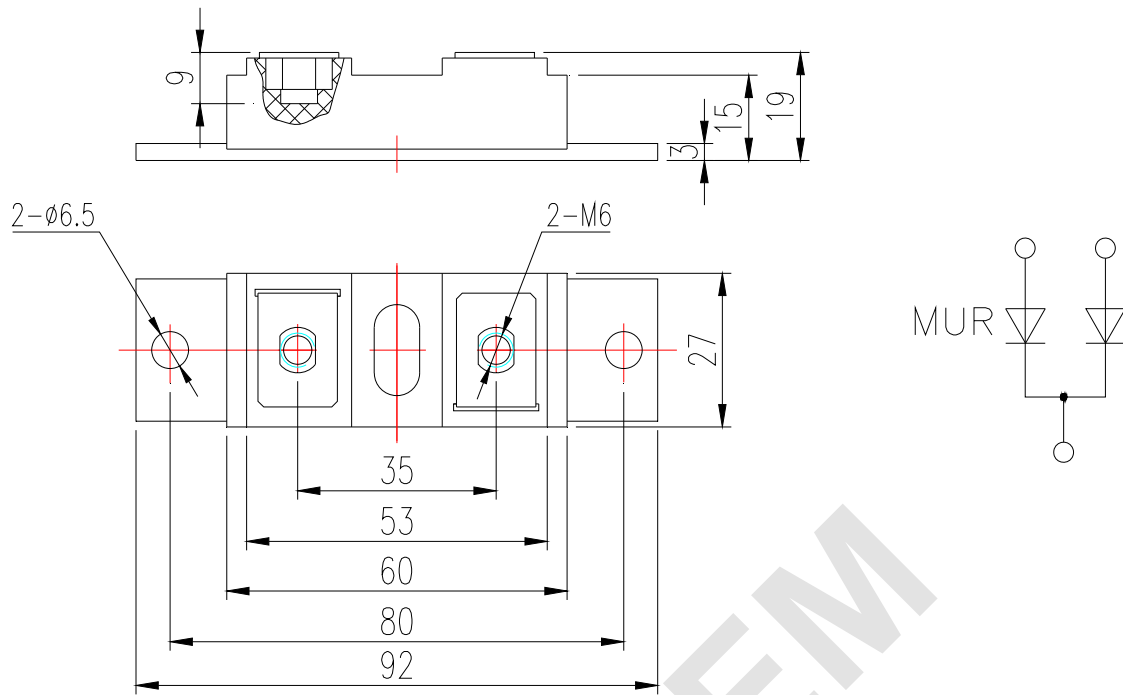


Fig.4

Outline:



TECHSEM