

Features:

- Isolated mounting base 4000V~
- Pressure contact technology with Increased power cycling capability
- Space and weight saving

Typical Applications:

- Various rectifiers
- DC supply for PWM inverter

V _{RRM}	Type & Outline
2600V	MDx250-26-413F3
2800V	MDx250-28-413F3
3000V	MDx250-30-413F3
3200V	MDx250-32-413F3
3400V	MDx250-34-413F3
3600V	MDx250-36-413F3
3600V	MD250-36-413F3G

MDx stands for any type of **MDC, MDA, MDK**

SYMBOL	CHARACTERISTIC	TEST CONDITIONS	T _j (°C)	VALUE			UNIT
				Min	Type	Max	
I _{F(AV)}	Mean forward current	180° half sine wave 50Hz Single side cooled, T _c =100°C	150			250	A
I _{F(RMS)}	RMS forward current					393	A
I _{RRM}	Repetitive peak current	at V _{RRM}	150			25	mA
I _{FSM}	Surge forward current	V _R =60%V _{RRM} , t=10ms half sine	150			9.5	kA
I ² t	I ² t for fusing coordination					451	10 ³ A ² s
V _{FO}	Threshold voltage		150			0.95	V
r _F	Forward slope resistance					0.87	mΩ
V _{FM}	Peak forward voltage	I _{FM} =750A	25			1.76	V
R _{th(j-c)}	Thermal resistance Junction to case	Single side cooled per chip				0.13	°C/W
R _{th(c-h)}	Thermal resistance case to heatsink	Single side cooled per chip				0.04	°C/W
V _{iso}	Isolation voltage	50Hz, R.M.S, t=1min, I _{iso} :1mA(MAX)		4000			V
F _m	Terminal connection torque(M8)			10		12	N·m
	Mounting torque(M6)			4.5		6.0	N·m
T _{vj}	Junction temperature			-40		150	°C
T _{stg}	Stored temperature			-40		125	°C
W _t	Weight				810		g
Outline	413F3						

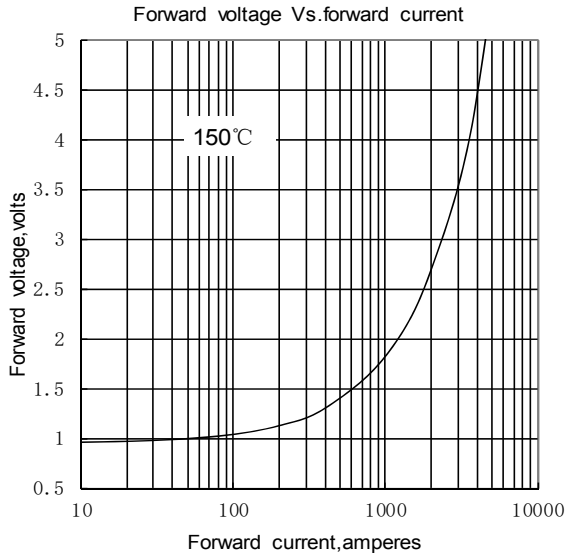


Fig.1

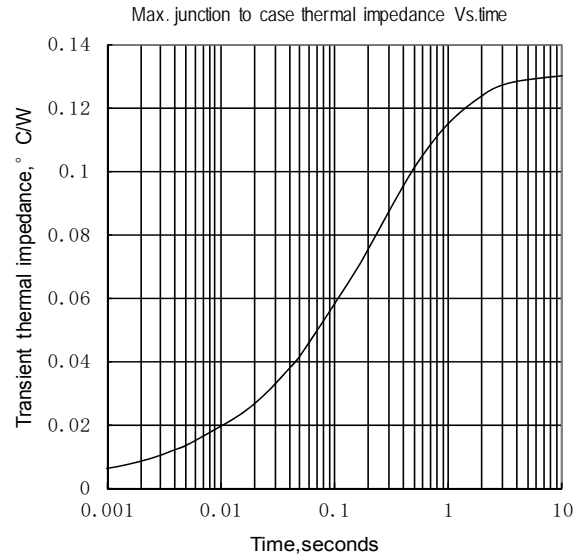


Fig.2

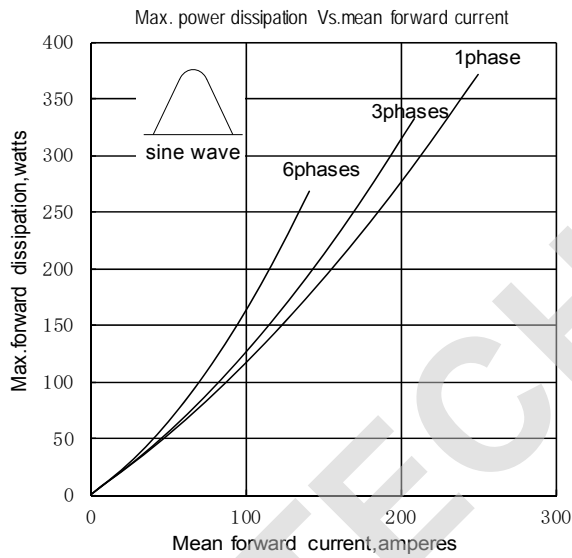


Fig.3

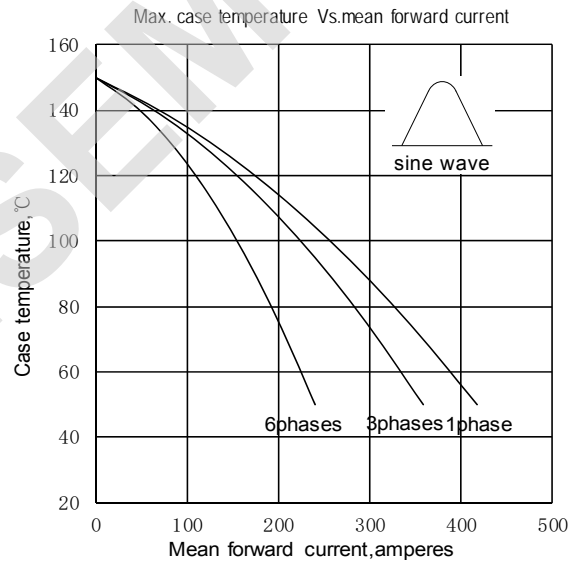


Fig.4

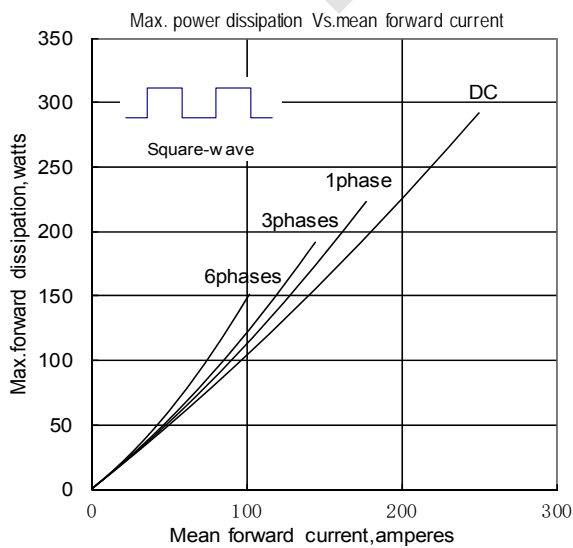


Fig.5

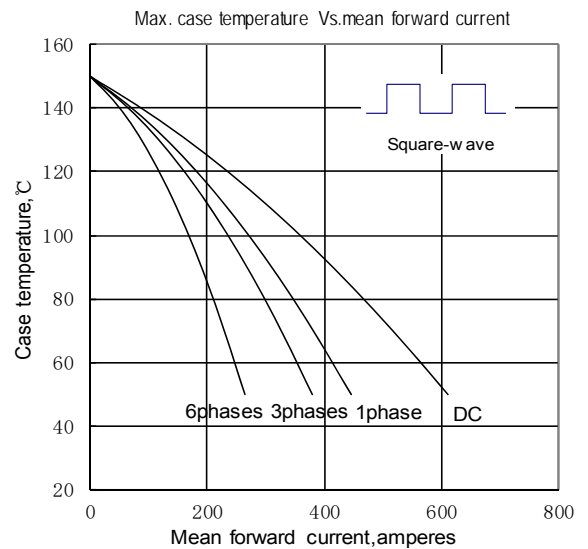


Fig.6

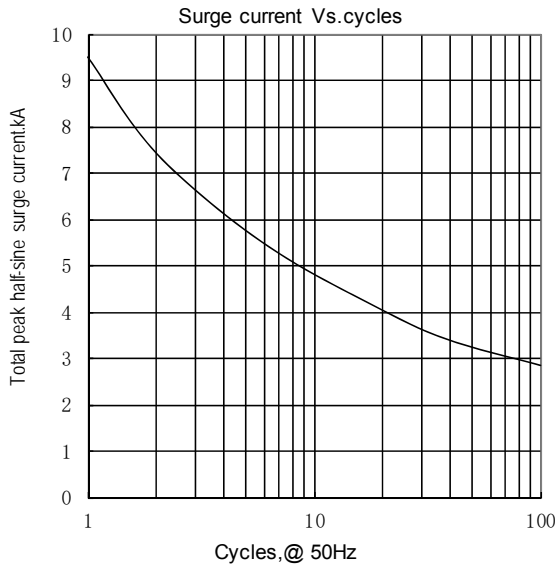


Fig.7

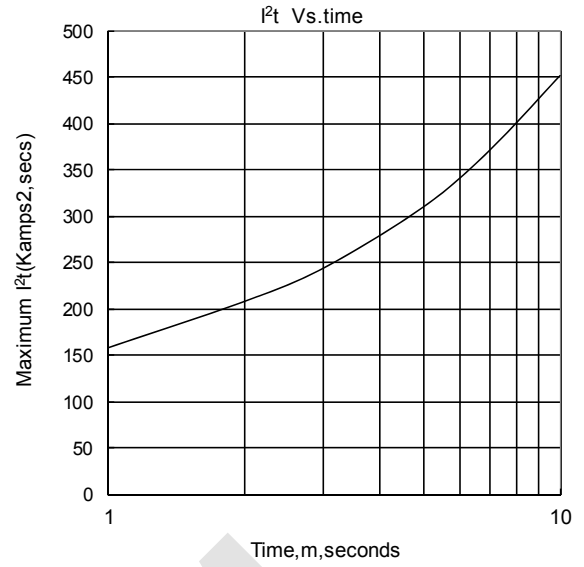
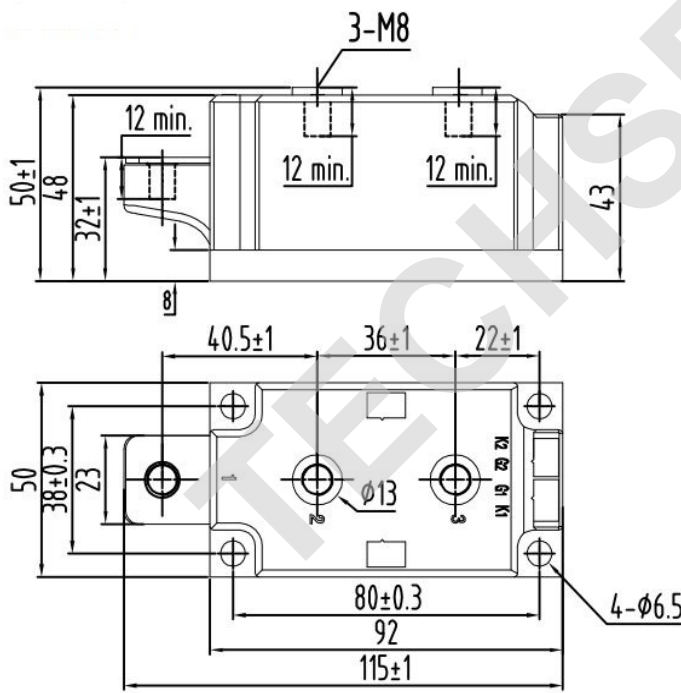


Fig.8

Outline:



Unmarked dimensional tolerance: ±0.5mm

