



Features:

- Isolated mounting base 3000V~
- Pressure contact technology with increased power cycling capability
- Space and weight saving

Typical Applications:

- Various rectifiers
- DC supply for PWM inverter

V _{RRM}	Type & Outline
2000V	MD1200-20-432F2
2200V	MD1200-22-432F2
2500V	MD1200-25-432F2

SYMBOL	CHARACTERISTIC	TEST CONDITIONS	T _j (°C)	VALUE			UNIT
				Min	Type	Max	
I _{F(AV)}	Mean forward current	180° half sine wave 50Hz Single side cooled, T _c =100°C	150			1200	A
I _{F(RMS)}	RMS forward current		150			1884	A
I _{RRM}	Repetitive peak current	at V _{RRM}	150			50	mA
I _{FSM}	Surge forward current	10ms half sine wave , V _R =0.6V _{RRM}	150			30	kA
I ² t	I ² t for fusing coordination					4500	10 ³ A ² s
V _{FO}	Threshold voltage		150			0.70	V
r _F	Forward slope resistance					0.10	mΩ
V _{FM}	Peak forward voltage	I _{FM} =3000A	25			1.30	V
R _{th(j-c)}	Thermal resistance Junction to case	Single side cooled				0.042	°C/W
R _{th(c-h)}	Thermal resistance case to heatsink	Single side cooled				0.020	°C/W
V _{iso}	Isolation voltage	50Hz, R.M.S, t=1min, I _{iso} :1mA(max)		3000			V
F _m	Terminal connection torque(M12)			12.0		14.0	N·m
	Mounting torque(M6)			4.5		6.0	N·m
T _{vj}	Junction temperature			-40		150	°C
T _{stg}	Stored temperature			-40		125	°C
W _t	Weight				2700		g
Outline	432F2						

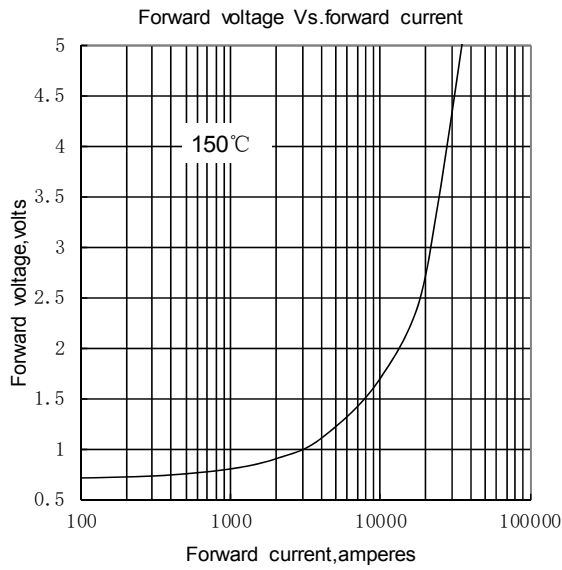


Fig.1

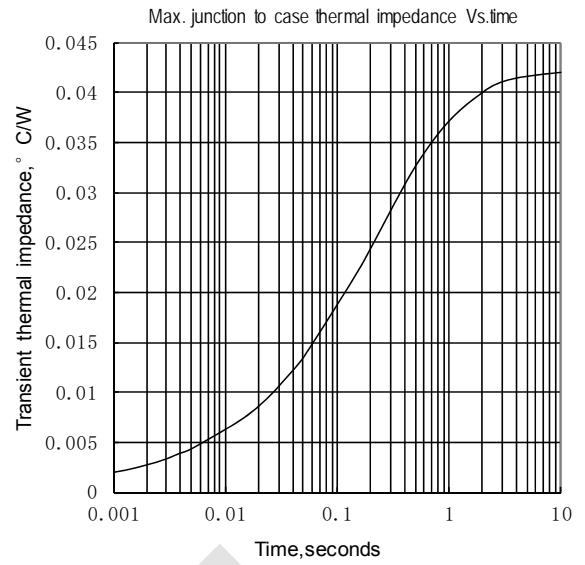


Fig.2

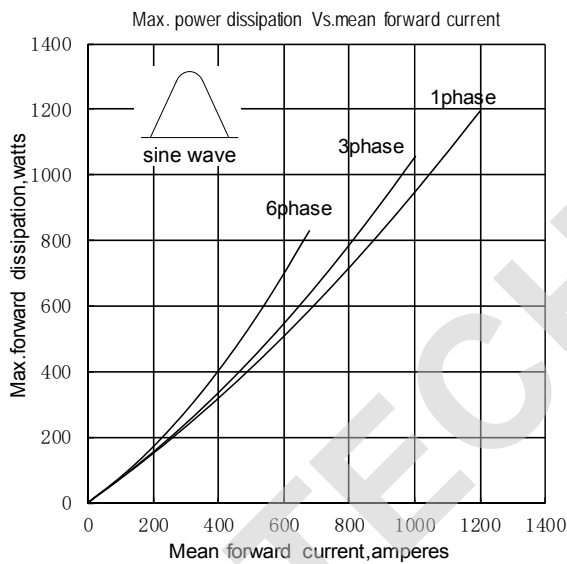


Fig.3

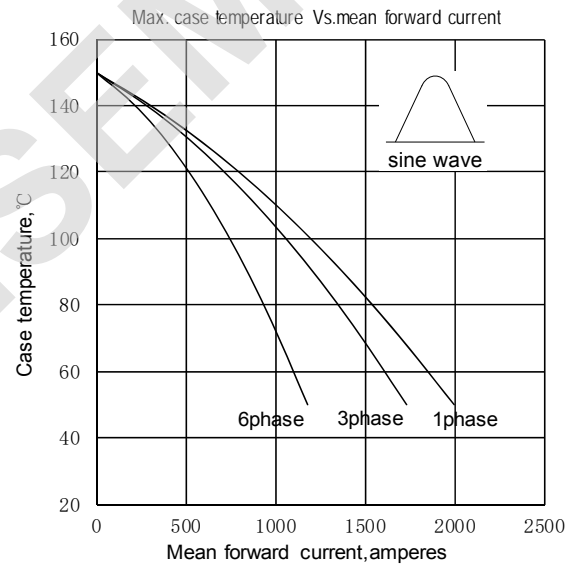


Fig.4

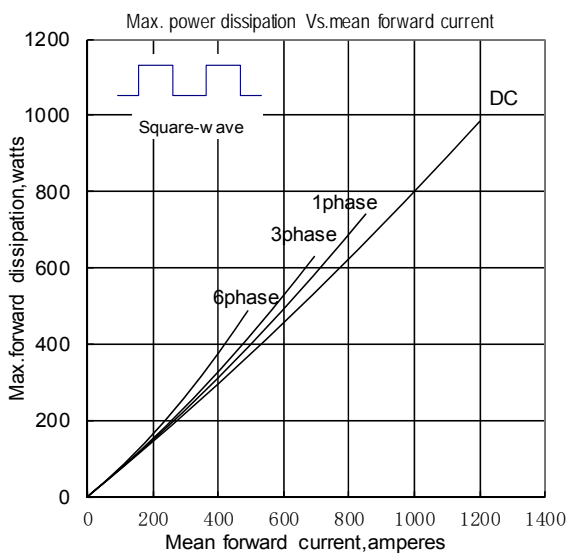


Fig.5

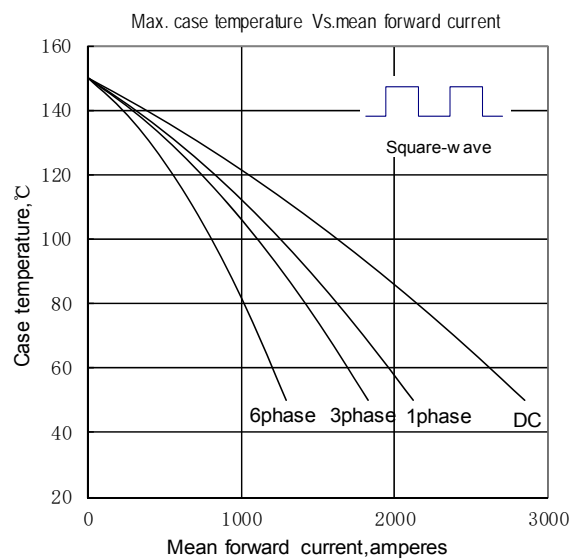


Fig.6

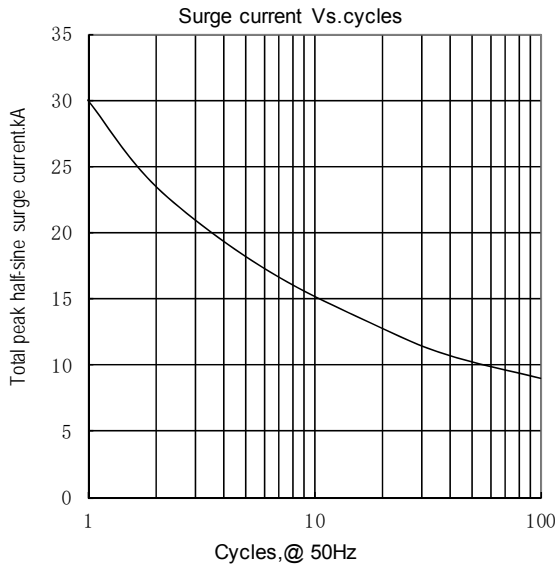


Fig.7

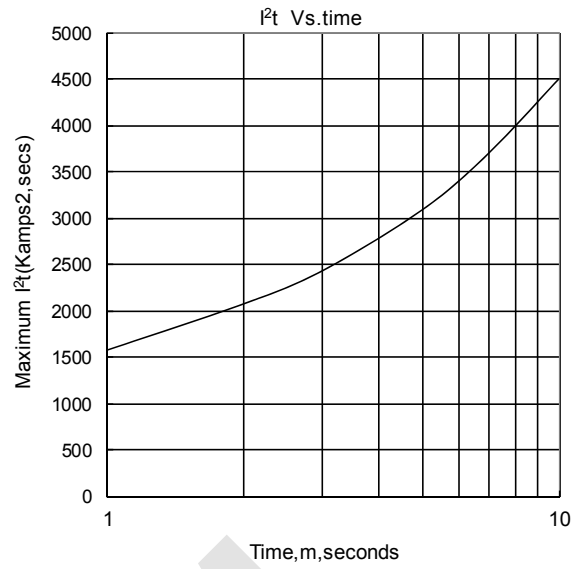
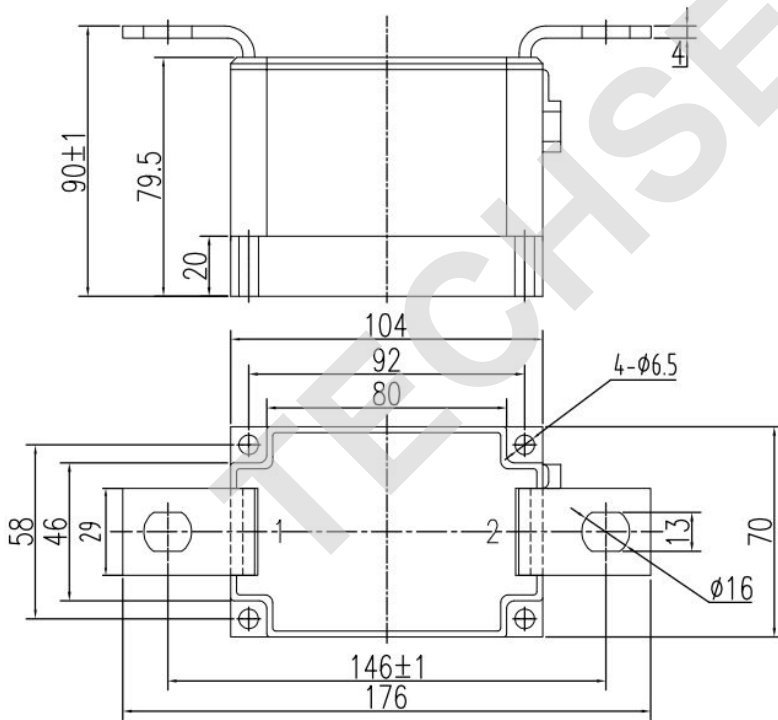
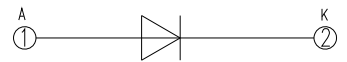


Fig.8

Outline:



MD



Unmarked dimensional tolerance: ± 0.5 mm