**Features**

- Low forward voltage drop
- High reverse voltage
- Hermetic metal cases with ceramic insulators

Typical Applications

- All purpose high power rectifier diodes
- High power resistance welding equipment
- Non-controllable and half-controllable rectifiers
- Controlled rectifiers

Part No. Y24ZPC-ZT19aT

I_{F(AV)}	560A		
V_{RRM}	1200V	1400V	
	1600V	1800V	
	2000V		

SYMBOL	CHARACTERISTIC	TEST CONDITIONS		T _J (°C)	VALUE			UNIT
					Min	Type	Max	
I _{F(AV)}	Mean forward current	180° half sine wave 50Hz Double side cooled,	T _C =85°C	175			560	A
V _{RRM}	Repetitive peak reverse voltage	t _p =10ms		175	1100		2000	V
I _{RRM}	Repetitive peak current	at V _{RRM}		175			16	mA
I _{FSM}	Surge forward current	10ms half sine wave		175			5	kA
I ² t	I ² t for fusing coordination	V _R =0.6V _{RRM}						125
V _{FO}	Threshold voltage			175			0.8	V
r _F	Forward slope resistance							0.86
V _{FM}	Peak forward voltage	I _{FM} =600A, F=5kN		25			1.80	V
Q _{rr}	Recovery charge	I _{FM} =1000A, t _p =4000μs, di/dt=-20A/μs, V _R =100V		175		1400		μC
R _{th(j-c)}	Thermal resistance Junction to case	At 180° sine double side cooled					0.080	°C /W
R _{th(c-h)}	Thermal resistance case to heat sink	Clamping force 5.0kN					0.020	
F _m	Mounting force				3.3		5.5	kN
T _{vj}	Junction temperature				-40		175	°C
T _{stg}	Stored temperature				-40		175	°C
W _t	Weight					60		g
Outline	ZT19aT							

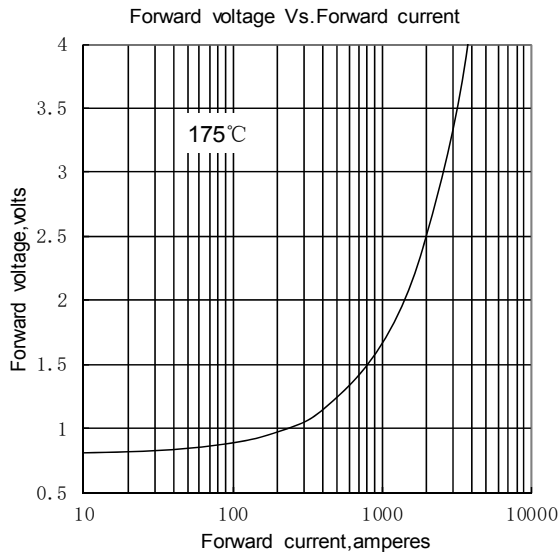


Fig.1

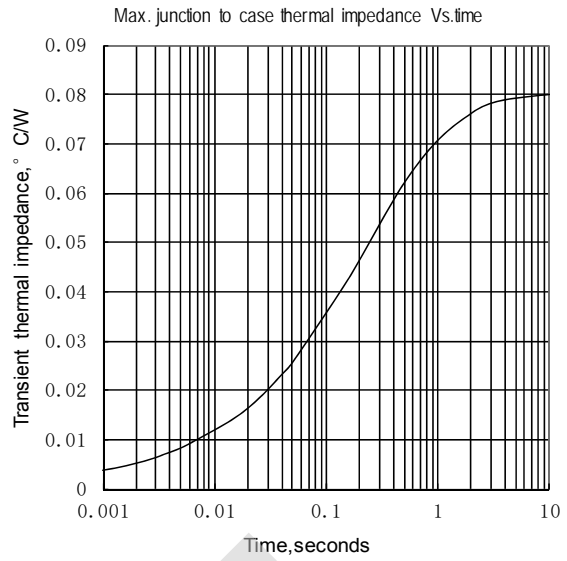


Fig.2

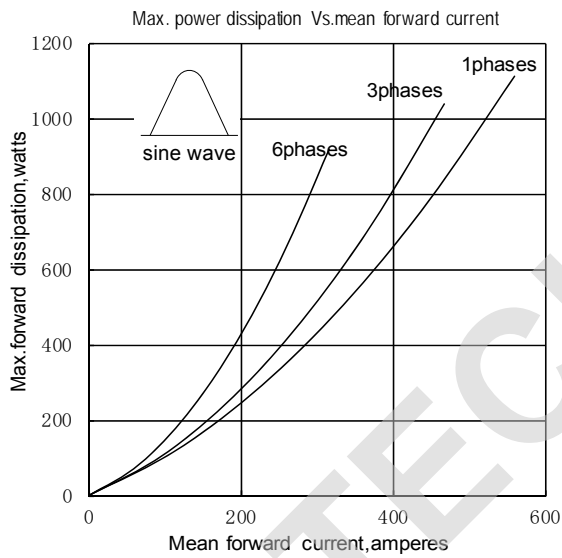


Fig.3

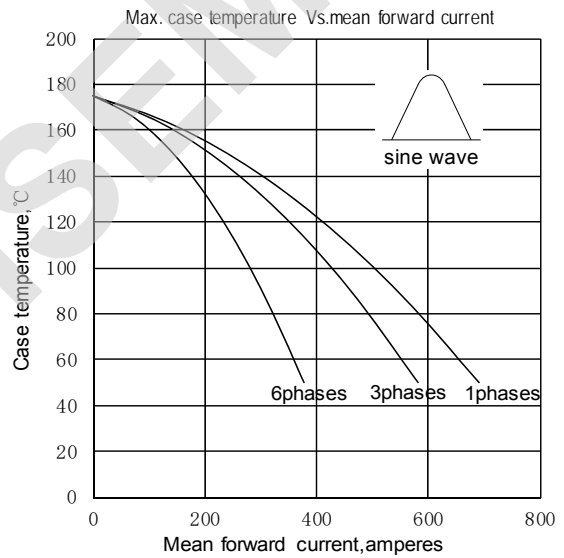


Fig.4

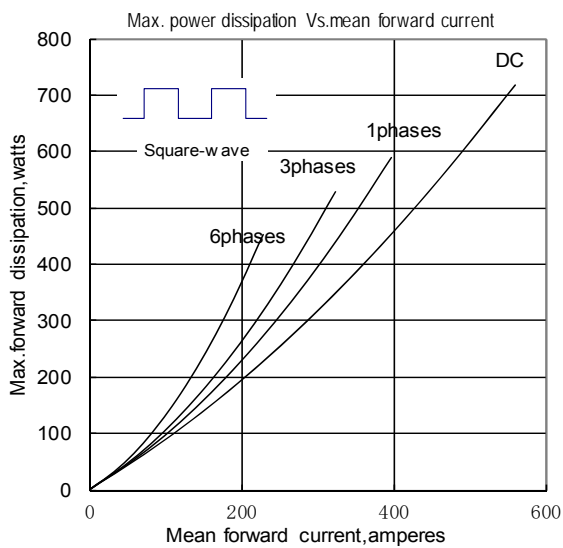


Fig.5

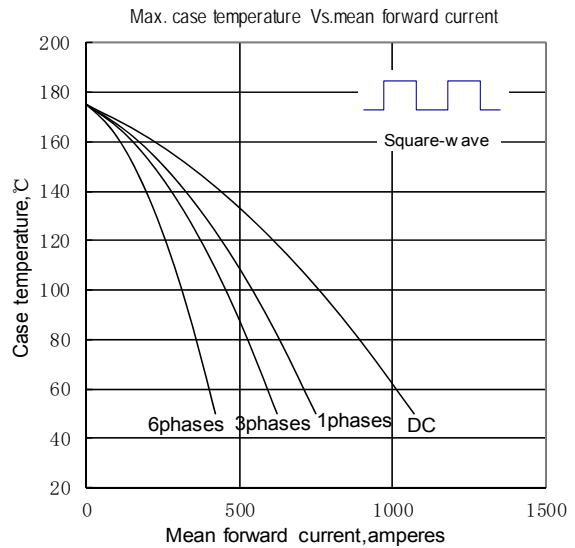


Fig.6

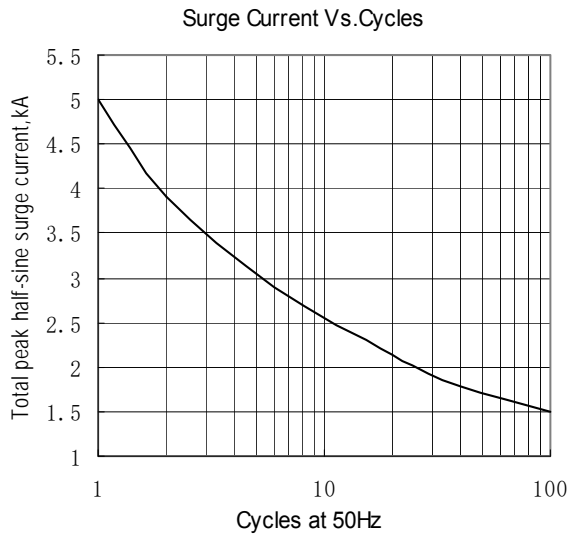


Fig.7

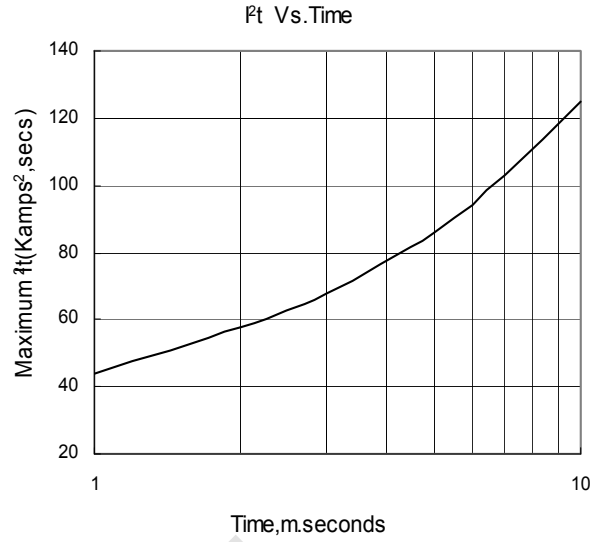
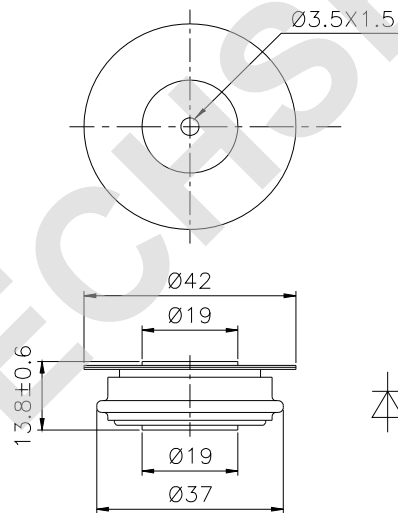


Fig.8

Outline:



TECHSEM reserves the right to change specifications without notice.