

**Features**

- n Low forward voltage drop
- n High reverse voltage
- n Hermetic metal cases with ceramic insulators

Typical Applications

- n All purpose high power rectifier diodes
- n High power resistance welding equipment
- n Non-controllable and half-controllable rectifiers
- n Controlled rectifiers

Part No. Y65ZPB-ZT60cT

I_{F(AV)}	2910A
V_{RRM}	200V 400V 600V 800V 1000V

SYMBOL	CHARACTERISTIC	TEST CONDITIONS		T _J (°C)	VALUE			UNIT
					Min	Type	Max	
I _{F(AV)}	Mean forward current	180° half sine wave 50Hz Double side cooled,	T _C =85°C	190			5630	A
V _{RRM}	Repetitive peak reverse voltage	tp=10ms		190	200		1000	V
I _{RRM}	Repetitive peak current	at V _{RRM}		190			100	mA
I _{FSM}	Surge forward current	10ms half sine wave		190			58	kA
I ² t	I ² t for fusing coordination	V _R =0.6V _{RRM}					16820	A ² s*10 ³
V _{FO}	Threshold voltage			190			0.63	V
r _F	Forward slope resistance						0.058	mΩ
V _{FM}	Peak on-state voltage	I _{FM} =5000A, F=32kN		25			1.32	V
Q _{rr}	Recovery charge	I _{FM} =2000A, tp=4000μs, di/dt=-20A/μs, V _R =100V		190		4500		μC
R _{th(j-c)}	Thermal resistance Junction to case	At 180° sine double side cooled Clamping force 32kN					0.013	°C/W
R _{th(c-h)}	Thermal resistance case to heat sink					0.0035		
F _m	Mounting force				27		34	kN
T _{vj}	Junction temperature				-40		190	°C
T _{stg}	Stored temperature				-40		190	°C
W _t	Weight					820		g
Outline	ZT60cT							

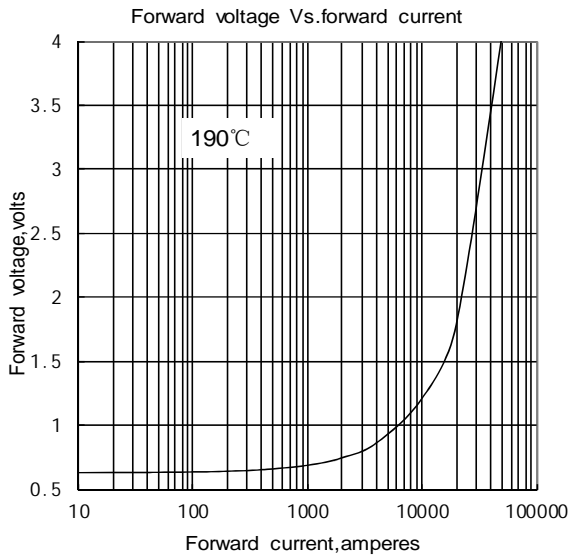


Fig.1

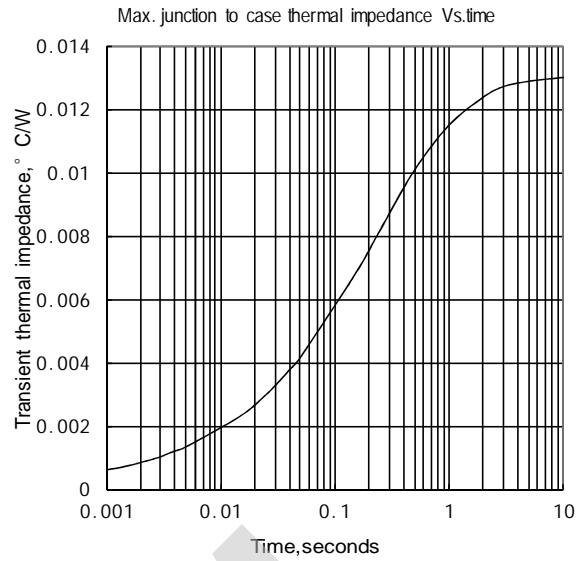


Fig.2

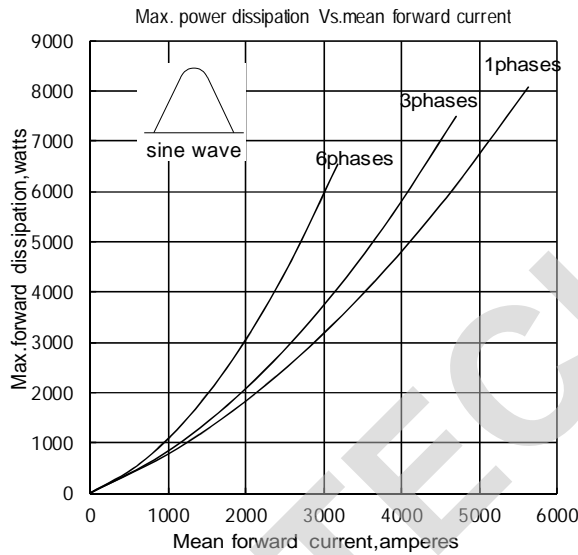


Fig.3

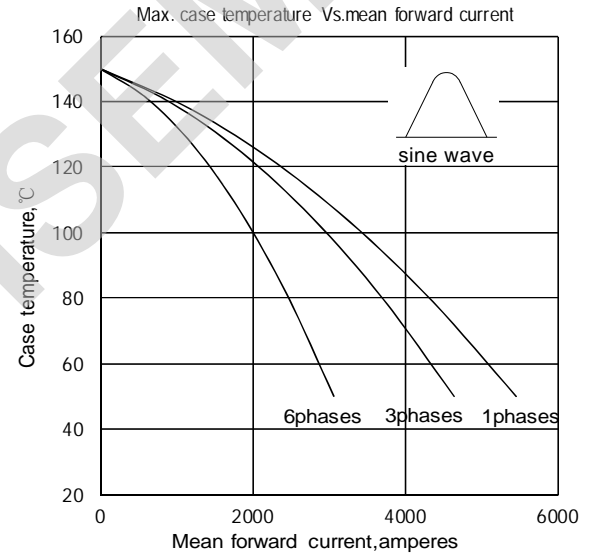


Fig.4

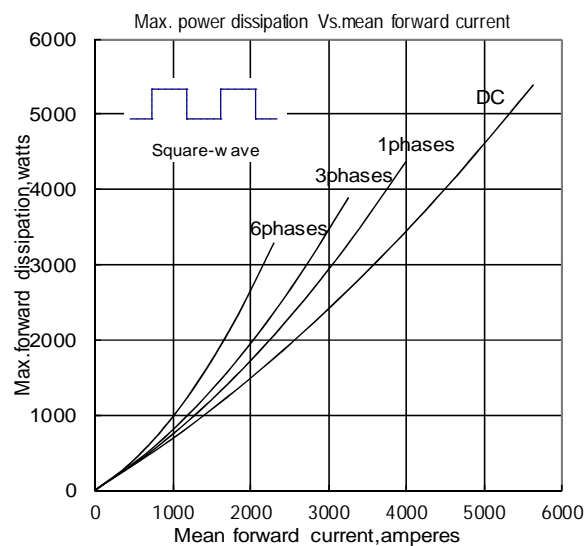


Fig.5

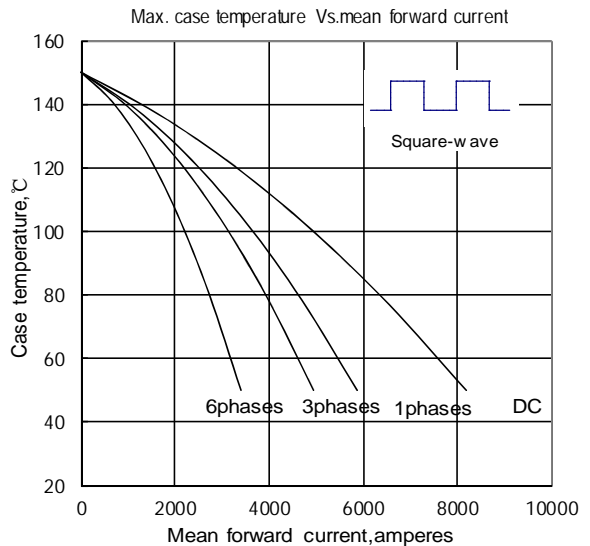


Fig.6

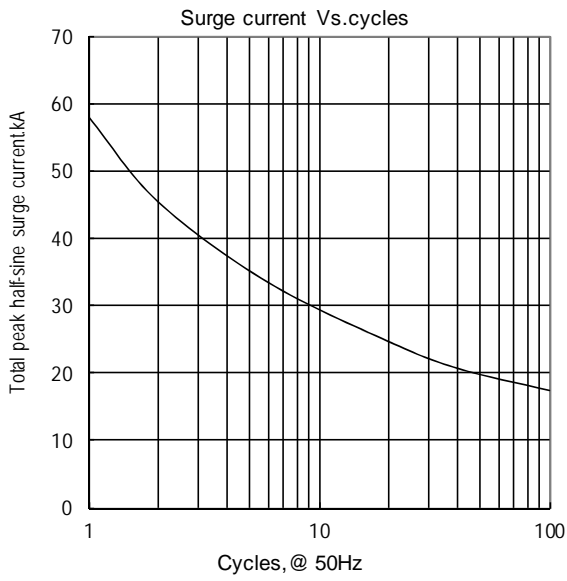


Fig.7

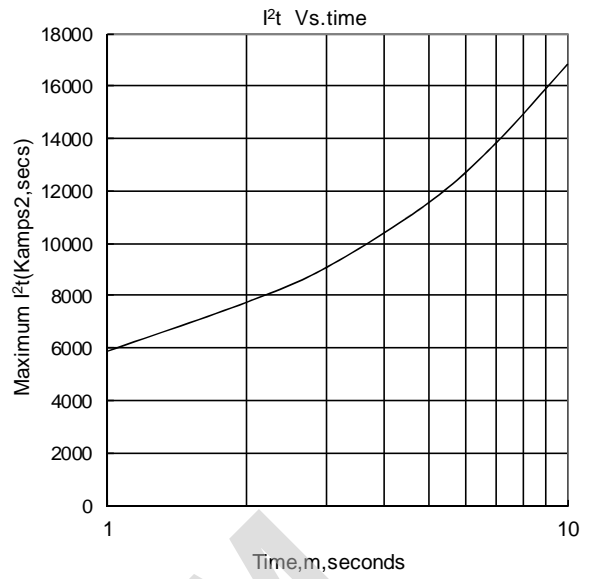
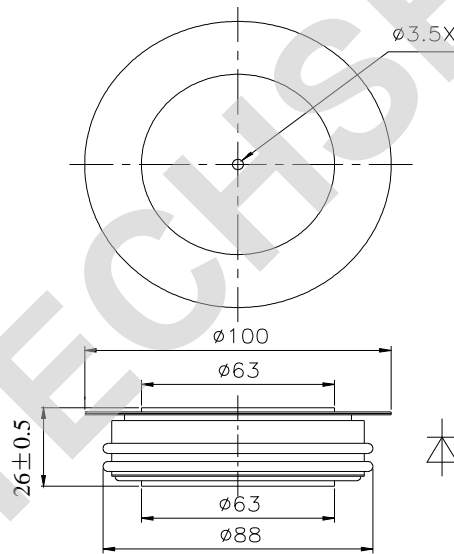


Fig.8

Outline:



TECHSEM reserves the right to change specifications without notice.