

Features

- n Optimized for high current rectifiers
- n Very low threshold voltage and slop resistance
- n Very low thermal resistance

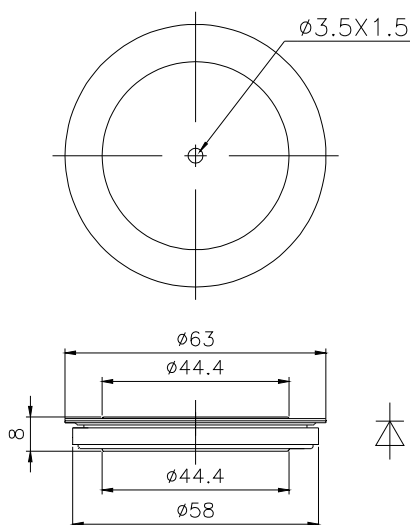
Typical Applications

- n High current application For Welders up to 1000Hz
- n Electrode plating

Part No. Y50ZPA-ZT44T		
I_{F(AV)}	7100A	
V_{RRM}	200V	400V

SYMBOL	CHARACTERISTIC	TEST CONDITIONS	T _j (°C)	VALUE			UNIT
				Min	Type	Max	
I _{F(AV)}	Mean forward current	180° half sine wave 50Hz Double side cooled, T _C =85°C	175			7100	A
V _{RRM}	Repetitive peak reverse voltage	tp=10ms	175	200		400	V
I _{RRM}	Repetitive peak current	at V _{RRM}	175			50	mA
I _{FSM}	Surge forward current	10ms half sine wave	175			55	kA
I ² t	I ² T for fusing coordination	V _R =0V _{RRM}				15000	10 ³ A ² s
V _{FO}	Threshold voltage	I _{FM} =5000-15000A	175			0.74	V
r _F	Forward slop resistance						0.025
V _{FM}	Max Peak on-state voltage	I _{FM} =5000A, F=30kN	25			1.05	V
Q _{rr}	Recovery charge	I _{FM} =2000A, tp=4000μs, di/dt=-20A/μs, V _R =100V	175			400	μC
R _{th(j-c)}	Thermal resistance Junction to case	At 180° sine double side cooled Clamping force 30.0kN				0.010	°C/W
R _{th(c-h)}	Thermal resistance case to heat sink					0.005	
F _m	Mounting force			20	30	40	kN
T _{vj}	Junction temperature			-40		175	°C
T _{stg}	Stored temperature			-40		175	°C
W _t	Weight					150	g
Outline	ZT44T						

Outline:



TECHSEM reserves the right to change specifications without notice.