**Features**

- n Low forward voltage drop
- n High reverse voltage
- n Hermetic metal cases with ceramic insulators

**Typical Applications**

- n All purpose high power rectifier diodes
- n High power resistance welding equipment
- n Non-controllable and half-controllable rectifiers
- n Controlled rectifiers

**Part No. Y30ZPB-ZT25aT**

<b>I<sub>F(AV)</sub></b>	<b>1230A</b>	
<b>V<sub>RRM</sub></b>	<b>200V</b>	<b>400V</b>
	<b>600V</b>	<b>800V</b>
	<b>1000V</b>	<b>1200V</b>
	<b>1400V</b>	

SYMBOL	CHARACTERISTIC	TEST CONDITIONS	T <sub>i</sub> (°C)	VALUE			UNIT
				Min	Type	Max	
I <sub>F(AV)</sub>	Mean forward current	180° half sine wave 50Hz Double side cooled, T <sub>C</sub> =85°C	190			1230	A
V <sub>RRM</sub>	Repetitive peak reverse voltage	tp=10ms	190	200		1400	V
I <sub>RRM</sub>	Repetitive peak current	at V <sub>RRM</sub>	190			30	mA
I <sub>FSM</sub>	Surge forward current	10ms half sine wave	190			11	kA
I <sup>2</sup> t	I <sup>2</sup> t for fusing coordination	V <sub>R</sub> =0.6V <sub>RRM</sub>					605
V <sub>FO</sub>	Threshold voltage		190			0.95	V
r <sub>F</sub>	Forward slope resistance						0.31
V <sub>FM</sub>	Peak forward voltage	I <sub>FM</sub> =1200A, F=7.0kN	25			1.80	V
Q <sub>rr</sub>	Recovery charge	I <sub>FM</sub> =1000A, tp=4000μs, di/dt=-20A/μs, V <sub>R</sub> =100V	190		1600		μC
R <sub>th(j-c)</sub>	Thermal resistance Junction to case	At 180° sine double side cooled Clamping force 7.0kN				0.045	°C/W
R <sub>th(c-h)</sub>	Thermal resistance case to heat sink					0.010	
F <sub>m</sub>	Mounting force			5.3		10	kN
T <sub>vj</sub>	Junction temperature			-40		190	°C
T <sub>stg</sub>	Stored temperature			-40		190	°C
W <sub>t</sub>	Weight				80		g
Outline	ZT25aT						

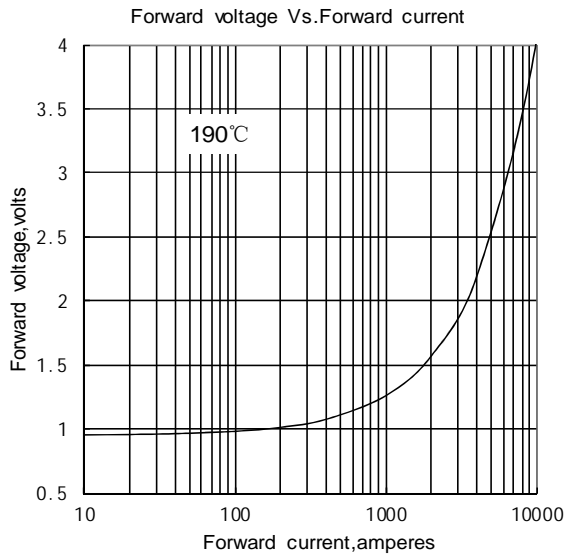


Fig1

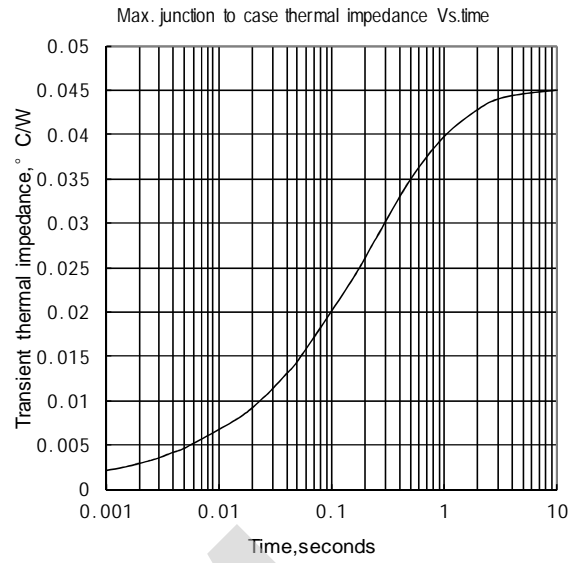


Fig2

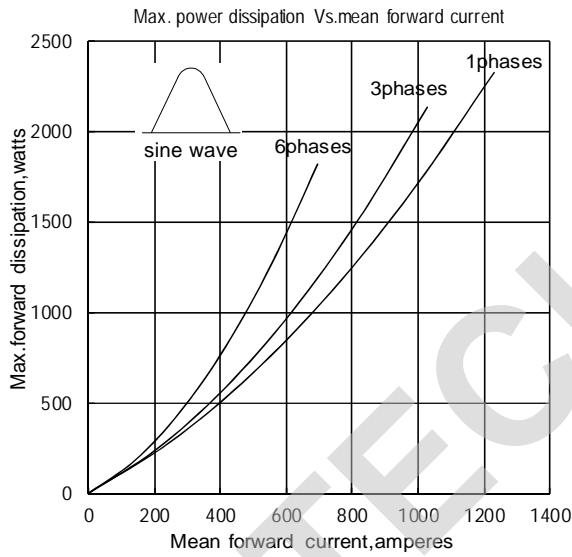


Fig3

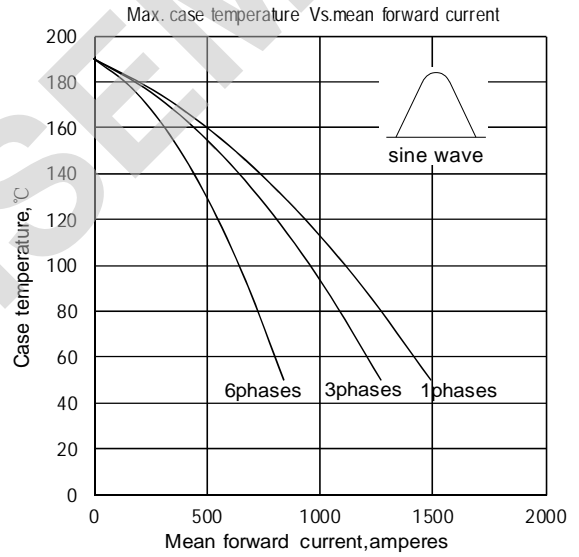


Fig4

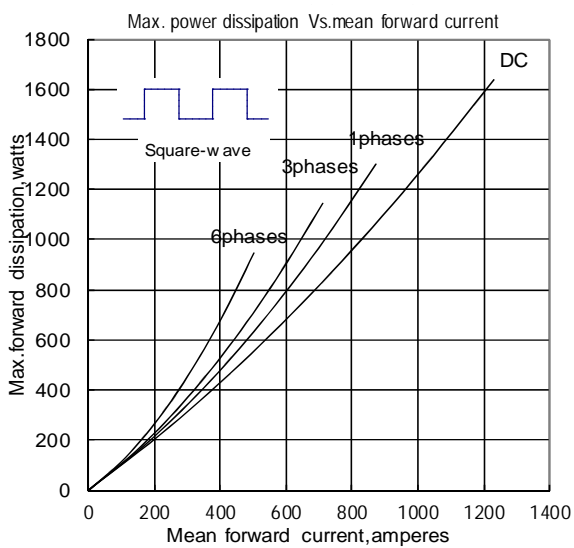


Fig5

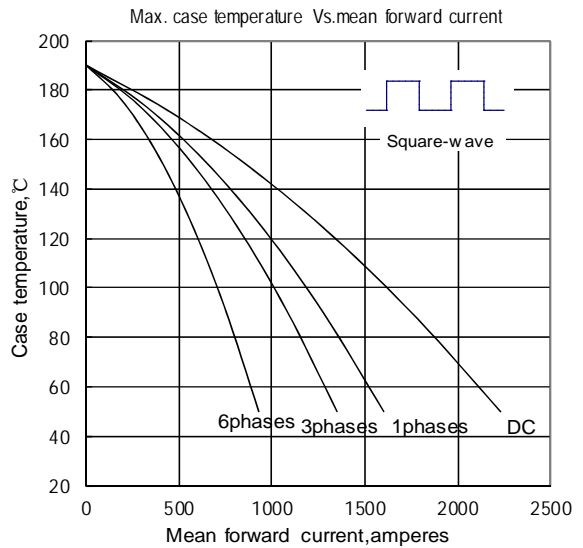


Fig6

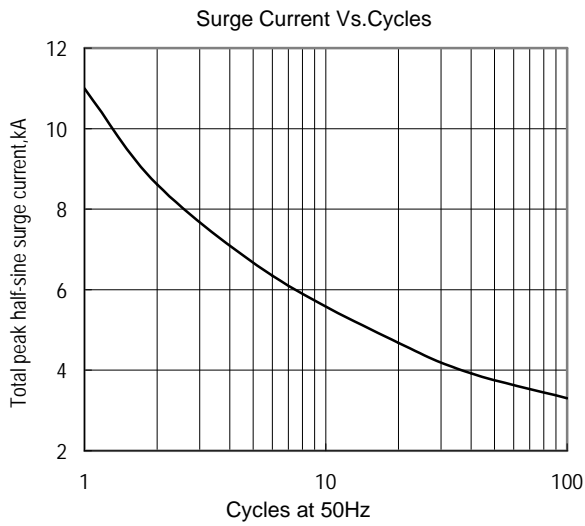


Fig.7

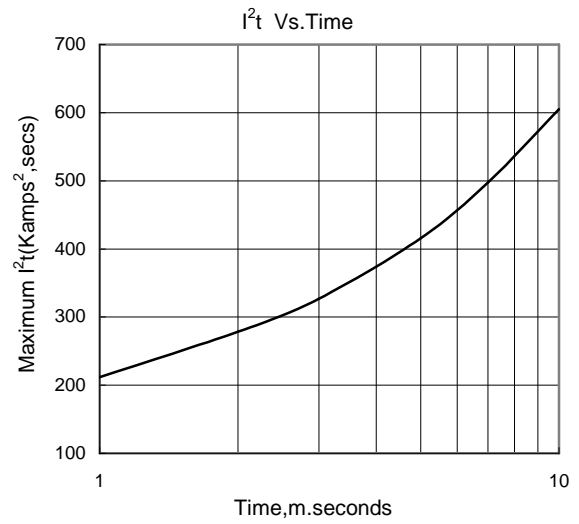
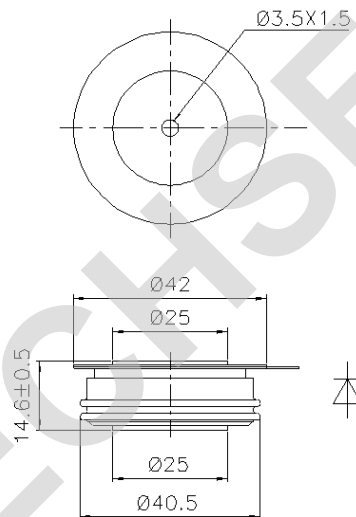


Fig.8

Outline:



TECHSEM reserves the right to change specifications without notice.